


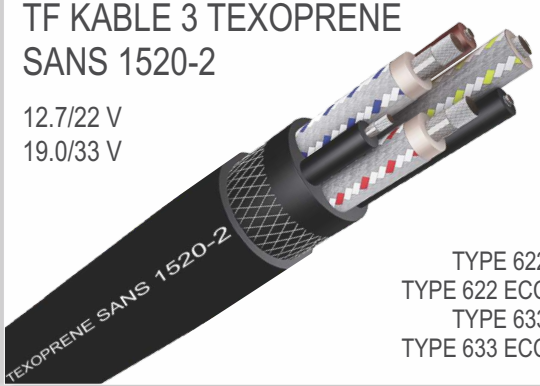
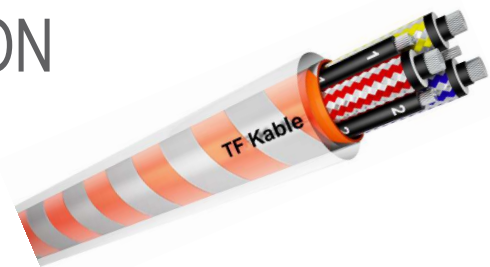


SPECIALISED MINING CABLES

<p>TF KABLE 3 TEXOPRENE SCOOP 640/1100 V</p>  <p>TRM TRMC TRSS SCOOP</p>	<p>TF KABLE 3 TEXOPRENE SANS 1520-1 640/1100 V 1900/3300 V</p>  <p>TYPE 41 TYPE 61 TYPE 63</p>
<p>TF KABLE 3 TEXOPRENE SANS 1520-2 3.8/6.6 V 6.35/11 V</p>  <p>TYPE 66 TYPE 66 ECC TYPE 611 TYPE 611 ECC</p>	<p>TF KABLE 3 TEXOPRENE SANS 1520-2 12.7/22 V 19.0/33 V</p>  <p>TYPE 622 TYPE 622 ECC TYPE 633 TYPE 633 ECC</p>

OUR LATEST INNOVATION

Flexible, reflective or neon TPU sheathed screened mining cables. High abrasion and tensile pull properties.



Manufacturer of flameproof and explosion proof products

Proof Engineering specialises in the design and manufacture of innovative flameproof, explosion proof and non-flameproof plugs, sockets, adaptors and cable couplers for the mining and tunneling industries. The range includes 0.6 kV through to 35kV, 120A through 800A couplers in a variation of configurations i.e. plugs, sockets, adaptors, as well as a PLM aluminium range that meets international specifications for hazardous and non-hazardous areas.

In addition, we are able to offer our customers:

- ✓ Fitment of the connectors to the cable when purchased as a complete set
- ✓ Comprehensive design capabilities (inclusive of unique or special designs to suit specific applications)
- ✓ Fully equipped in-house foundry and machining capacity
- ✓ State-of-the-art machining CNC machining

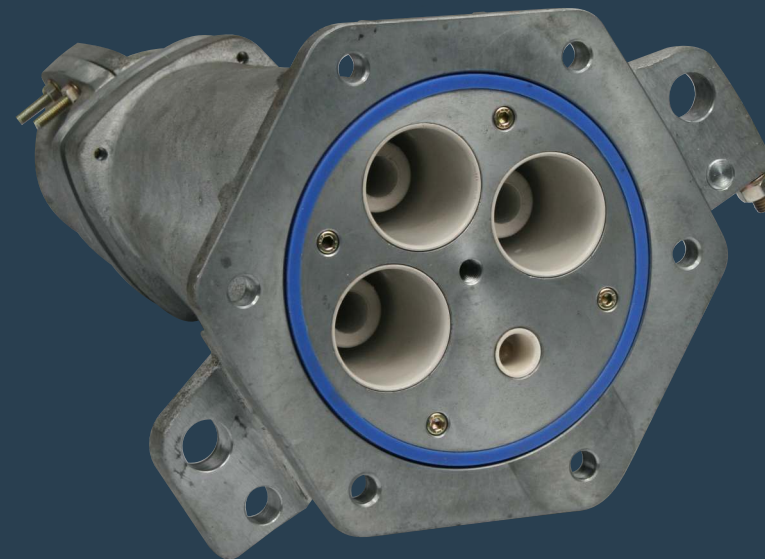
PROOF MINING SOLUTIONS

PROOF ENGINEERING
A division of Hudaco
JHB (HO): 011 824 1146
Fax: 011 824 1237
Email: sales@proofholdings.co.za
Web: www.proofeng.co.za

MANUFACTURING FACILITY
No 368 Sifon Street
Robertville, Roodepoort, 1709



PROOF MINING SOLUTIONS



400A 12kV
Half Coupler & Adaptor

400A 12kV HALF COUPLER & ADAPTOR

400A 12kV BOLTED ADAPTOR

Technical Data

Adaptor, Electrical

- ✓ Complete phase segregation, no phase-to-phase failures
- ✓ Contact quantity & type: 3 Pin & 1 pilot (2 pilots optional)
- ✓ Connector type: Bolted Adaptor
- ✓ Current rating: 400A
- ✓ Flameproof certified
- ✓ Housing: Brass or Pro-Alloy
- ✓ Individually screened insulators
- ✓ Phase conductors: Copper
- ✓ Pilot: Brass
- ✓ Tails can be fitted in-house
- ✓ Voltage: 12 000V
- ✓ Certified to SANS IEC60079-0-1 & SANS 1489



Test Report No.

- ✓ High voltage 3822/83930B
- ✓ Lightning impulse: 3822/83930A
- ✓ Temperature rise: 3842/87173/P33
- ✓ 3-Phase current: 3842/84499/P53

400A 12kV BOLTED HALF COUPLER

Technical Data

Coupler, Electrical

- ✓ Cable entry for SWA or UA
- ✓ Complete phase segregation, no phase-to-phase failures
- ✓ Contact quantity & type: 3 Pin & 1 pilot (2 pilots optional)
- ✓ Connector type: Bolted half coupler
- ✓ Current rating: 400A
- ✓ Flameproof certified
- ✓ Housing: Brass or Pro-Alloy
- ✓ Individually screened insulators
- ✓ New shorter body: Less weight, easier to handle
- ✓ Phase conductors: Copper
- ✓ Pilot: Brass
- ✓ Voltage: 12 000V
- ✓ Certified to SANS IEC60079-0-1 & SANS 1489



Test Report No.

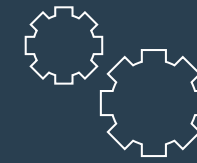
- ✓ High voltage 3822/83930B
- ✓ Lightning impulse: 3822/83930A
- ✓ Temperature rise: 3842/87173/P33
- ✓ 3-Phase current: 3842/84499/P53

400A 12kV NEW CONNECTION KIT

Technical Data

Kit, Connection, Electrical

- ✓ Complete phase segregation, no phase-to-phase failures
- ✓ Contacts can be removed & re-set for improved connection
- ✓ Connection kit for 12 000V 400A bolted half coupler & adaptor
- ✓ Female contacts: Copper
- ✓ Female contacts housed within a silicone sleeve
- ✓ Flameproof certified
- ✓ Housing: Silicone
- ✓ Pilot contact: Brass
- ✓ Removes all air voids
- ✓ Certified to SANS IEC60079-0-1 & SANS 1489



Features and Benefits

- Available in Pro-Alloy anti-theft material
- Grubscrew or crimp type connectors
- Individually screened contacts
- Silicone connecting sleeves (reduces air with the joint)

Applications

- Power supply to underground machines
- Power supply to surface-to-underground machines

After Sales Service Solutions

- Quickest and easiest coupler available on the market to terminate
- Termination of the cable into the coupler (available on request)
- Training on terminating the coupler (available on request)
- Coupler repair services (available on request)
- Spares locally manufactured (ex-stock)
- Technical back-up and support 24/7

