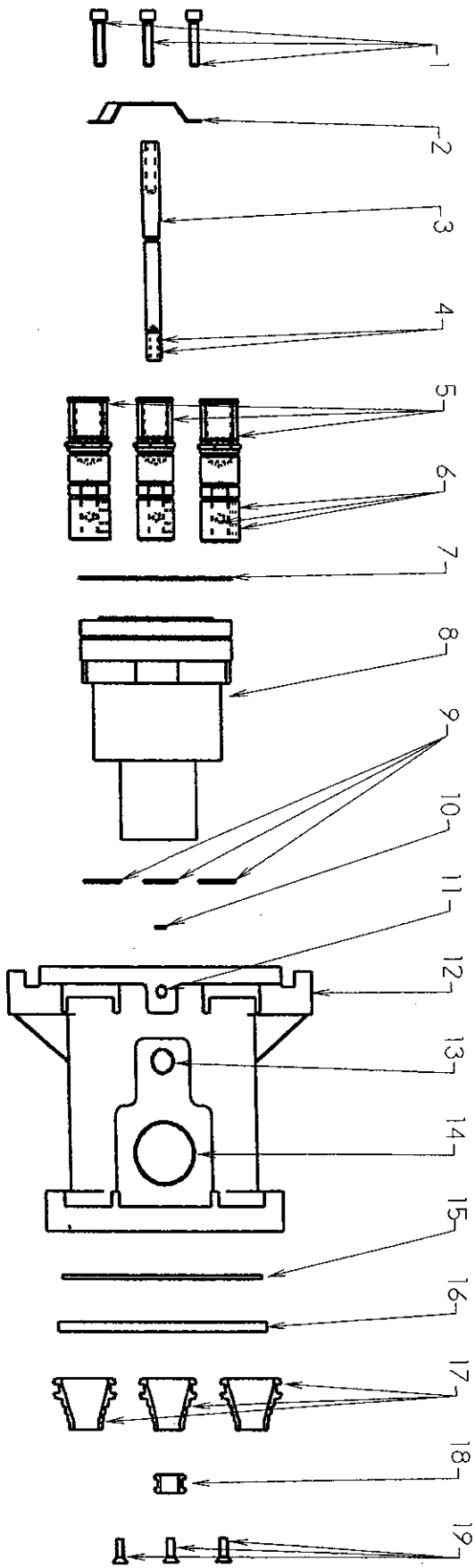
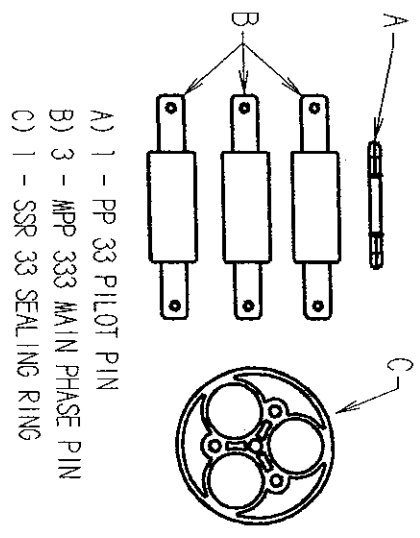


3.3kV ADAPTOR

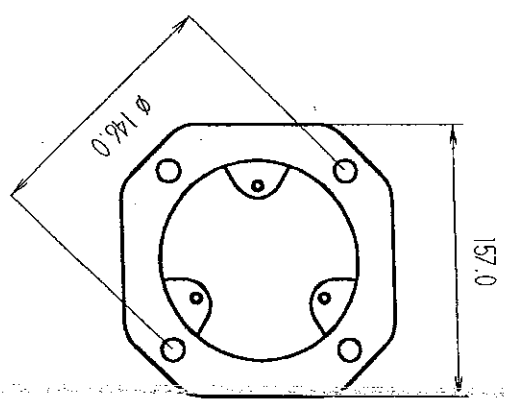


- 1) 3 - M6 X 40mm CAP SCREW
- 2) ST 33 INSULATOR STAR
- 3) PT 33 PILOT TUBE
- 4) 2 - M4 X 10mm GRUB SCREW
- 5) 3 - CT 33 CONTACT TUBE
- 6) 9 - M8 X 12mm GRUB SCREW
- 7) OR 33 INSULATOR O-RING
- 8) IN 33 INSULATOR
- 9) 3 - CC 25 CONTACT CIRCLIP
- 10) CC 09 PILOT CIRCLIP
- 11) M8 X 30mm EARTH STUD
- 12) AD 331 ADAPTOR BODY

- 13) 3/8" BSP T FILLER PLUG
- 14) 1/4" BSP T FILLER PLUG
- 15) O-RING AD33
- 16) 1 - TUFNOL 33 TUFNOL BOARD
- 17) 3 - PHG 33
- 18) 1 - PG 33
- 19) 3 - M6 X 10mm COUNTERSUNK CAP SCREW



- A) 1 - PP 33 PILOT PIN
- B) 3 - MPP 333 MAIN PHASE PIN
- C) 1 - SSR 33 SEALING RING



AD 333 C

A3