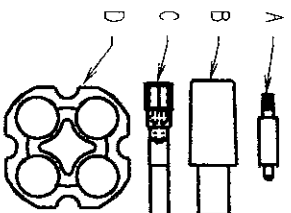


- 1) HAC124
- 2) ADS124
- 3) AD121
- 4) TUFNOL124
- 5) PG124
- 6) PI124
- 7) INS124
- 8) PP124
- 9) MCP124
- 10) SR124
- 11) OR11
- 12) PRC124
- 13) PCC124
- 14) HCS126
- 15) HCS126
- 16) AD1S125

- 17) CR124
- 18) SPT11
- 19) GP11
- 20) P-PLUG-B

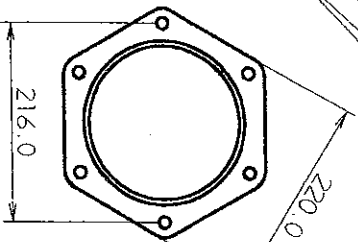
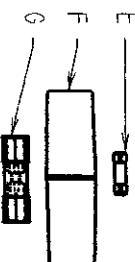
- CAGE X 1
- STAR X 1
- ADAPTOR BODY X 1
- TUFNOL BACK COVER X 1
- CONTACT PIN GROMMET X 3
- INSULATOR - PILOT X 1
- INSULATOR - CONTACT PIN X 3
- PILOT PIN WITH GRUB SCREWS X 1
- CONTACT PIN WITH GRUB SCREWS X 3
- SEALING RING X 1
- BACK COVER 0 - RING X 1
- PILOT PIN CIRCLIP X 1
- CONTACT PIN CIRCLIP X 3
- CAGE M6 X 30 CAP SCREW X 4
- CAGE TO STAR M6 X 30 CAP SCREW X 1
- M6 X 15 COUNTERSUNK CAP SCREW X 4
- PILOT RUBBER GROMMET X 1
- 7/8 BSW X 200MM
- SEPERATION TOOL WITH WASHERS AND NUTS X 1
- GUIDE PIN X 1
- PLUG FILLER 1 1/4" BSP X 1

OLD KIT 123 / 124



- A) 1 - PT 124 12 KV PILOT
- B) 3 - ON SLEEVE 124 OLD TO NEW SLEEVE
- C) 3 - ON PIN 123/4 OLD TO NEW CONTACT PIN 300 or 400 AMP
- D) 1 - ONPB 124 OLD TO NEW PHASE BARRIER

NEW KIT 124



- E) 1 - PT 124 12KV PILOT TUBE
- F) 3 - SLEEVE 124 12KV SLEEVE
- G) 3 - PCT 124 12KV CONTACT TUBE