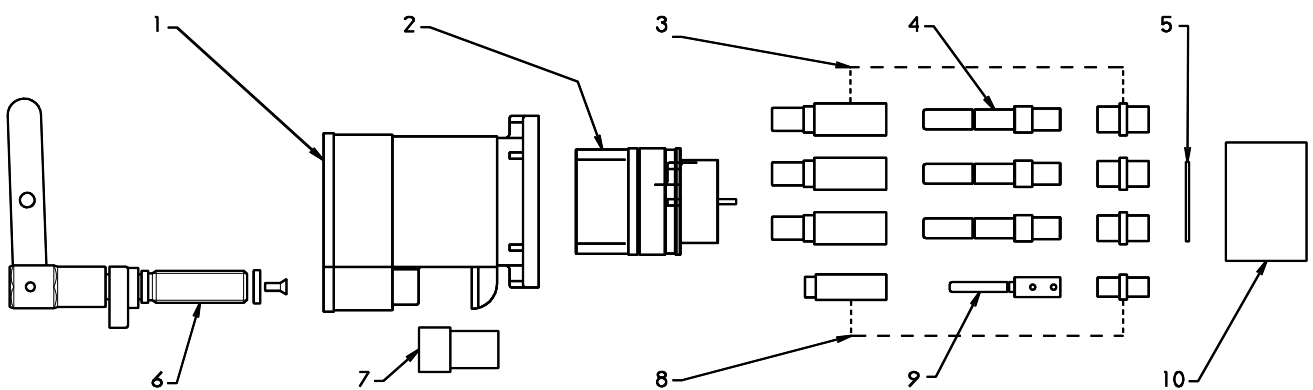


# 1.1kV 425A RESTRAINED SOCKET - Crimped



- |                          |             |                             |              |
|--------------------------|-------------|-----------------------------|--------------|
| 1. SOCKET BODY - BRASS   | MC-RS0134   | 5. INSULATOR RETAINING DISK | RSD-4        |
| SOCKET BODY - ZINC       | MC-RS0134-Z | 6. SPINDLE ASSEMBLY         | A-RS1034     |
| 2. SOCKET BARREL - BRASS | MC-RS0234   | 7. SPINDLE DUST CAP         | P-RS15L      |
| SOCKET BARREL - ZINC     | MC-RS0234-Z | 8. PILOT PIN                | AA-RSPP1134  |
| 3. PHASE CONTACT PIN     | AA-S114     | INSULATOR AND BACK CAP KIT  | AA-RSPP11/34 |
| 4. PHASE CONTACT PIN.    | A-RS064-095 | 9. PILOT PIN                | A-RSPP11/34  |
| 13.5mm ENTRY             | A-RS064-120 | 10. SOCKET DUST CAP         | P-DCS        |
| 15.5mm ENTRY             |             |                             |              |

PROOF ENGINEERING

A3

