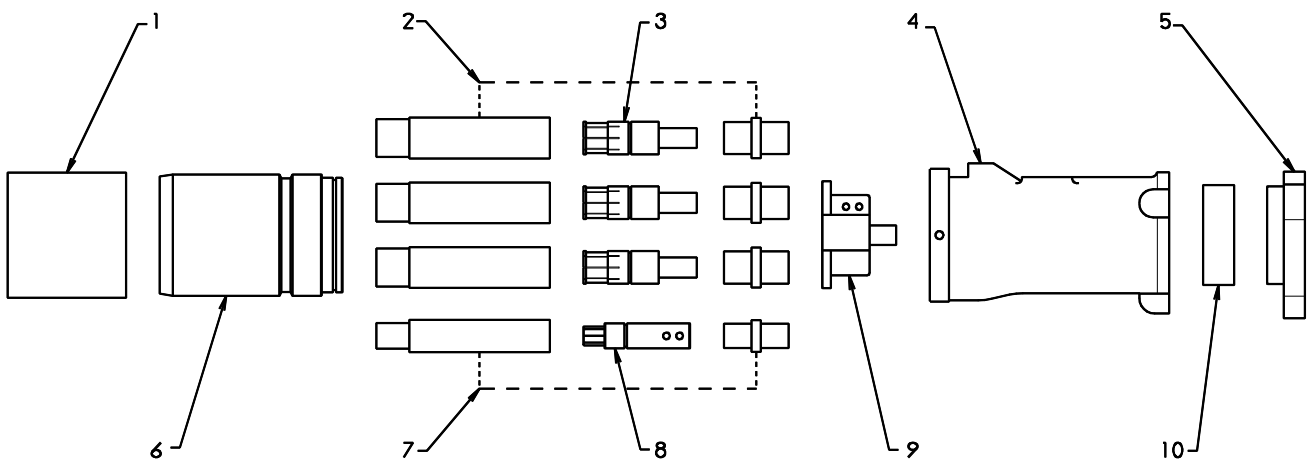


1.1kV 425A RESTRAINED PLUG - CRIMPED



- | | | | |
|--|----------------------------|---|-------------|
| 1. DUST COVER - PLUG 425A | P-DCP425 | 6. PLUG BARREL - BRASS | M-RP0134 |
| | | PLUG BARREL - ZINC | M-RP0134-Z |
| 2. PHASE CONTACT TUBE
INSULATOR AND BACK CAP KIT | AA-P114 | 7. PILOT TUBE
INSULATOR AND BACK CAP KIT | AA-RP113406 |
| 3. PHASE CONTACT TUBE.
13.5mm ENTRY
15.5mm ENTRY | A-RP054-095
A-RP054-120 | 8. PILOT TUBE | A-RP11-3406 |
| 4. PLUG BODY - BRASS
PLUG BODY - ZINC | MC-RP1134
MC-RP1134-Z | 9. STAR - INSULATOR RETAINING | A-RP0934 |
| 5. CABLE GLAND - BRASS
CABLE GLAND - ZINC | MC-RP1234
MC-RP1234-Z | 10. COMPRESSION RING | |
| | | 50mm CABLE | MP1788-50 |
| | | 55mm CABLE | MP1788-55 |
| | | 60mm CABLE | MP1788-60 |
| | | 65mm CABLE | MP1788-65 |
| | | 70mm CABLE | MP1788-70 |

A3

PROOF ENGINEERING

