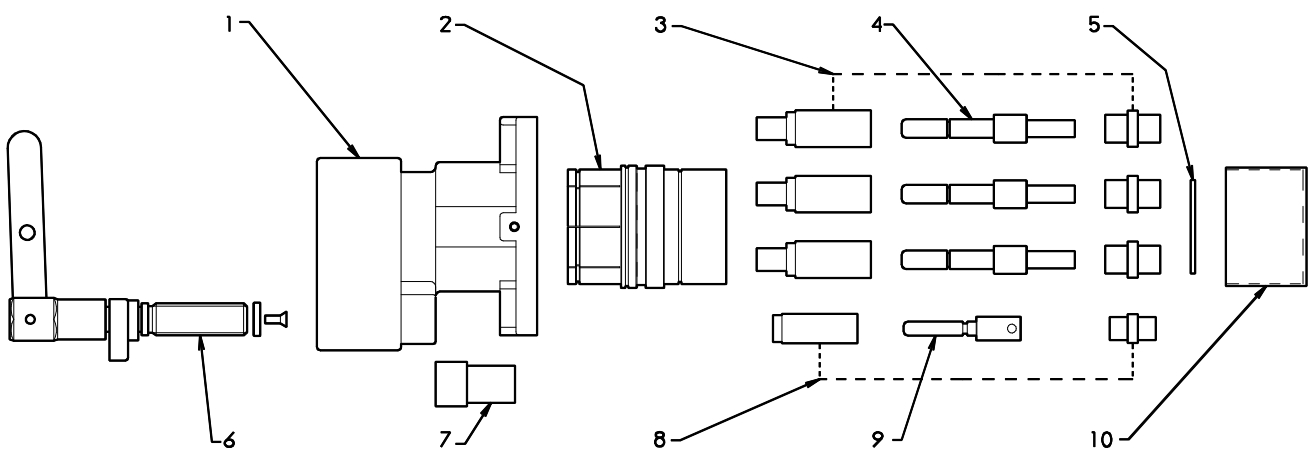


1.1kV 200A RESTRAINED SOCKET - Crimped



- | | | | |
|----------------------------|-------------|-----------------------------|---------|
| 1. SOCKET BODY - BRASS | MC-RS01 | 5. INSULATOR RETAINING DISK | RSD-1 |
| SOCKET BODY - ZINC | MC-RS01-Z | 6. SPINDLE ASSEMBLY | A-RS10 |
| 2. SOCKET BARREL - BRASS | MC-RS02 | 7. SPINDLE DUST CAP | P-RS15 |
| SOCKET BARREL - ZINC | MC-RS02-Z | 8. PILOT PIN | AA-RS09 |
| 3. PHASE CONTACT PIN | | INSULATOR AND BACK CAP KIT | AA-RS09 |
| INSULATOR AND BACK CAP KIT | AA-S112 | 9. PILOT PIN | A-RS09 |
| 4. PHASE CONTACT PIN. | | 10. SOCKET DUST CAP | P-DCS |
| 6.5mm ENTRY | A-RS06CA-16 | | |
| 7.5mm ENTRY | A-RS06CA-25 | | |
| 9.0mm ENTRY | A-RS06CA-35 | | |
| 10.5mm ENTRY | A-RS06CA-50 | | |
| 12.0mm ENTRY | A-RS06CA-70 | | |
| 13.5mm ENTRY | A-RS06CA-95 | | |

PROOF ENGINEERING

A3

