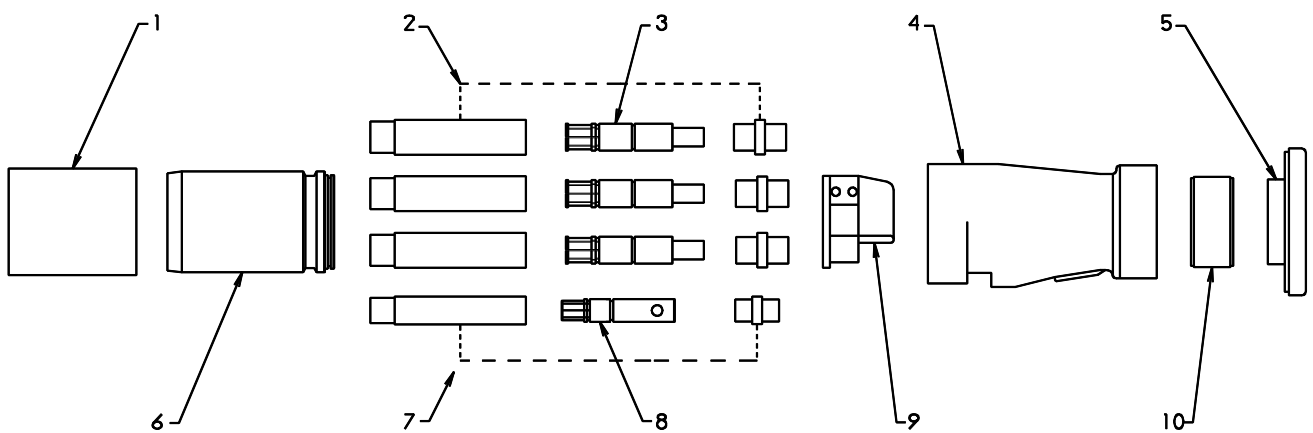


# 1.1kV 200A RESTRAINED PLUG - Crimped



1. DUST COVER - PLUG	P-D/COVER	6. PLUG BARREL - BRASS PLUG BARREL - ZINC	M-RP01 M-RP01-Z
2. PHASE CONTACT TUBE INSULATOR AND BACK CAP KIT	AA-P112	7. PILOT TUBE INSULATOR AND BACK CAP KIT	AA-RP05
3. PHASE CONTACT TUBE.		8. PILOT TUBE	A-RP05
6.5mm ENTRY	A-RP05CA-16	9. STAR - INSULATOR RETAINING	A-RP09
7.5mm ENTRY	A-RP05CA-25		
9.0mm ENTRY	A-RP05CA-35	10. COMPRESSION RING	
10.5mm ENTRY	A-RP05CA-50	28mm CABLE	A-RP14-28P
12.0mm ENTRY	A-RP05CA-70	37mm CABLE	A-RP14-37P
13.5mm ENTRY	A-RP05CA-95	41mm CABLE	A-RP14-41P
4. PLUG BODY - BRASS	MC-RP11-B	47mm CABLE	A-RP14-47P
PLUG BODY - ZINC	MC-RP11-Z	50mm CABLE	A-RP14-50P
5. CABLE GLAND - BRASS	MC-RP12-B		
CABLE GLAND - ZINC	MC-RP12-Z		

PROOF ENGINEERING

A3

