
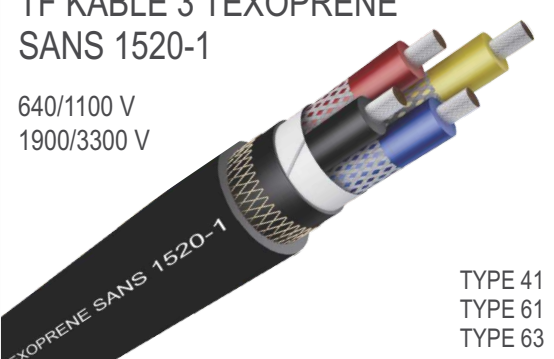




# SPECIALISED MINING CABLES

<p>TF KABLE 3 TEXOPRENE SCOOP 640/1100 V</p>  <p>TRM TRMC TRSS SCOOP</p>	<p>TF KABLE 3 TEXOPRENE SANS 1520-1 640/1100 V 1900/3300 V</p>  <p>TYPE 41 TYPE 61 TYPE 63</p>
<p>TF KABLE 3 TEXOPRENE SANS 1520-2 3.8/6.6 V 6.35/11 V</p>  <p>TYPE 66 TYPE 66 ECC TYPE 611 TYPE 611 ECC</p>	<p>TF KABLE 3 TEXOPRENE SANS 1520-2 12.7/22 V 19.0/33 V</p>  <p>TYPE 622 TYPE 622 ECC TYPE 633 TYPE 633 ECC</p>

## OUR LATEST INNOVATION

Flexible, reflective or neon TPU sheathed screened mining cables. High abrasion and tensile pull properties.



## Manufacturer of flameproof and explosion proof products

Proof Engineering specialises in the design and manufacture of innovative flameproof, explosion proof and non-flameproof plugs, sockets, adaptors and cable couplers for the mining and tunneling industries. The range includes 0.6 kV through to 35kV, 120A through 800A couplers in a variation of configurations i.e. plugs, sockets, adaptors, as well as a PLM aluminium range that meets international specifications for hazardous and non-hazardous areas.

In addition, we are able to offer our customers:

- ✓ Fitment of the connectors to the cable when purchased as a complete set
- ✓ Comprehensive design capabilities (inclusive of unique or special designs to suit specific applications)
- ✓ Fully equipped in-house foundry and machining capacity
- ✓ State-of-the-art machining CNC machining

## PROOF MINING CONNECTORS

PROOF ENGINEERING  
A division of Hudaco  
JHB (HO): 011 824 1146  
Fax: 011 824 1237  
Email: proofeng@mweb.co.za  
Web: www.proofeng.co.za

MANUFACTURING FACILITY  
No 368 Sifon Street  
Robertville, Roodepoort, 1709



# PROOF MINING CONNECTORS



## 366 200A 6.6kV Plugs & Sockets

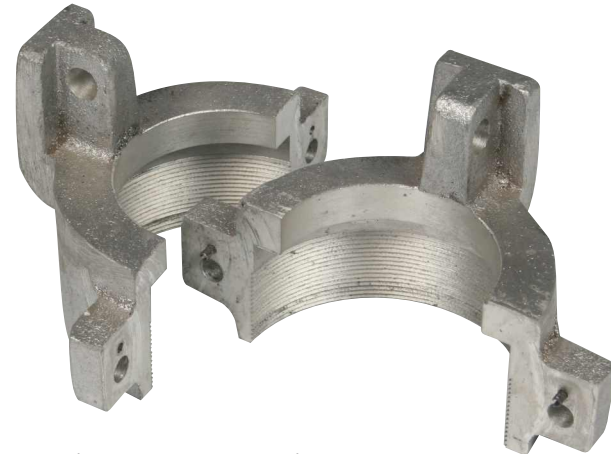




# 366 200A 6.6kV 200A PLUGS & SOCKETS

## Technical Data

- ✓ Contacts are sweated, no grubscrew or crimp type connectors
- ✓ Contacts drilled to suite cable requirements
- ✓ Contact pins: 3-Phase connection & one earth. Up to 3 pilots (optional)
- ✓ Insulator: Silicone
- ✓ IP54 rated & corrosion resistant
- ✓ Maximum cable diameter 76mm or 95mm<sup>2</sup>
- ✓ Maximum conductor size: 14mm
- ✓ New quick-release
- ✓ Plug & socket rated at 6.6kV 200A
- ✓ Quick-thread double start coupling & slow-thread system (available on request)



## Electrical Characteristics

- ✓ Dry lightning impulse 27kV (Test report: HV/100289B)
- ✓ Phase-to-phase 15kV
- ✓ Phase-to-earth 8.6kV



## Features and Benefits

- Flexible silicone insulators that can be individually replaced (Hard type insulators on request)
- Lightweight aluminium design
- Maximum cable OD: 95sqmm
- Grommets cut to suite cable OD
- Quick-release mechanism (easy coupling)
- Stainless steel pilots: Prevent bending during coupling
- 6000 Volt 200A rated

## Applications

- Primarily used in opencast applications
- Power supply to rock drills & shovels
- Used with flexible mining cable (similar to Texoprene TRM cable)

## After Sales Service Solutions

- Coupler repair services (on request)
- Spares locally manufactured (ex-stock)
- Technical back-up and support 24/7
- Termination of the cable into the coupler (available on request)
- Training on terminating the coupler (available on request)