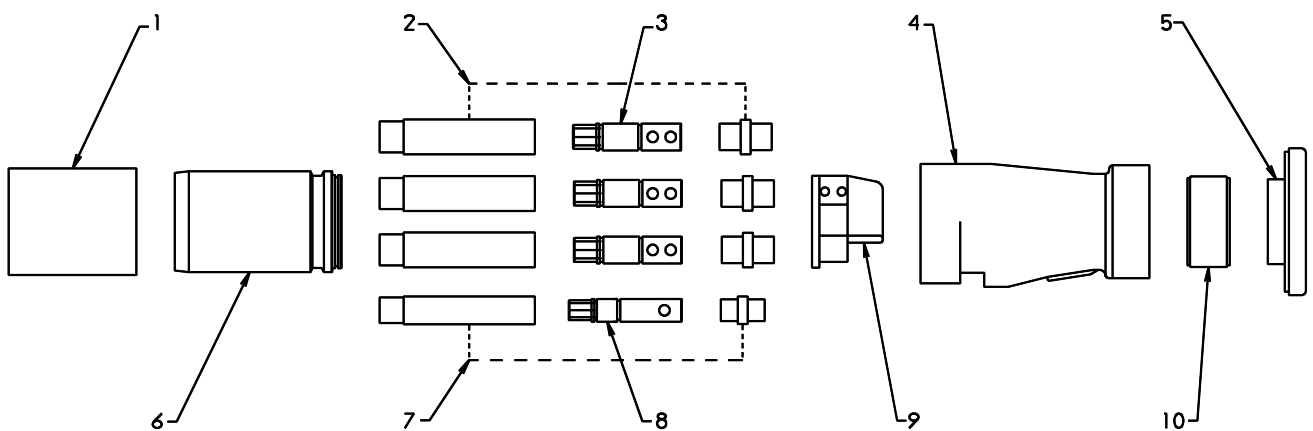


1.1kV 200A RESTRAINED PLUG - Grub Screws



1. DUST COVER - PLUG	P-D/COVER	6. PLUG BARREL - BRASS PLUG BARREL - ZINC	M-RP01 M-RP01-Z
2. PHASE CONTACT TUBE INSULATOR AND BACK CAP KIT	AA-P112	7. PILOT TUBE INSULATOR AND BACK CAP KIT	AA-RP05
3. PHASE CONTACT TUBE. 7.0mm ENTRY 8.0mm ENTRY 9.0mm ENTRY 9.5mm ENTRY	A-RP05-7 A-RP05-8 A-RP05-9 A-RP05-9.5	8. PILOT TUBE	A-RP05
4. PLUG BODY - BRASS PLUG BODY - ZINC	MC-RP11-B MC-RP11-Z	9. STAR - INSULATOR RETAINING	A-RP09
5. CABLE GLAND - BRASS CABLE GLAND - ZINC	MC-RP12-B MC-RP12-Z	10. COMPRESSION RING 28mm CABLE 37mm CABLE 41mm CABLE 47mm CABLE 50mm CABLE	A-RP14-28P A-RP14-37P A-RP14-41P A-RP14-47P A-RP14-50P

A3

PROOF ENGINEERING

