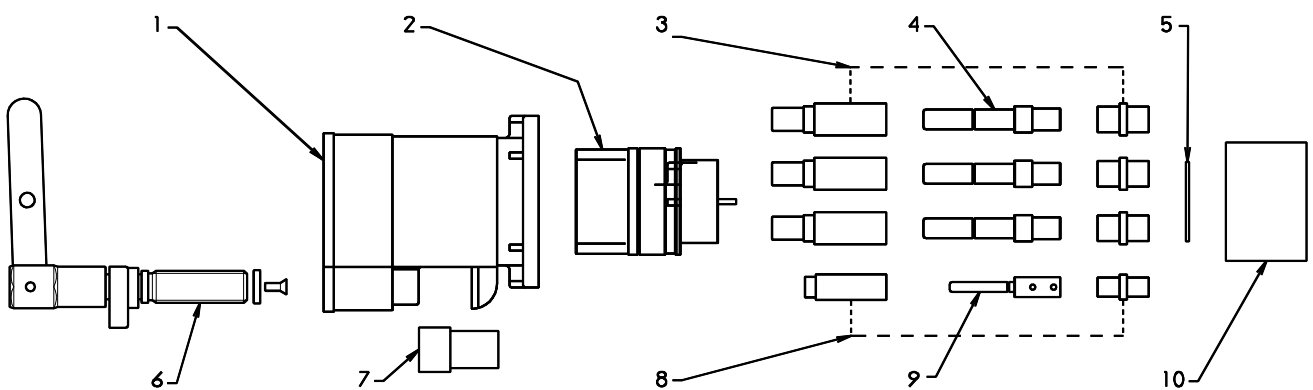


1.1kV 425A RESTRAINED SOCKET - Crimped



- | | | | |
|---|----------------------------|--|-------------|
| 1. SOCKET BODY - BRASS
SOCKET BODY - ZINC | MC-RS0134
MC-RS0134-Z | 5. INSULATOR RETAINING DISK | RSD-4 |
| 2. SOCKET BARREL - BRASS
SOCKET BARREL - ZINC | MC-RS0234
MC-RS0234-Z | 6. SPINDLE ASSEMBLY | A-RS1034 |
| 3. PHASE CONTACT PIN
INSULATOR AND BACK CAP KIT | AA-S114 | 7. SPINDLE DUST CAP | P-RS15L |
| 4. PHASE CONTACT PIN.
13.5mm ENTRY
15.5mm ENTRY | A-RS064-095
A-RS064-120 | 8. PILOT PIN
INSULATOR AND BACK CAP KIT | AA-RSPP1134 |
| | | 9. PILOT PIN | A-RSPP11/34 |
| | | 10. SOCKET DUST CAP | P-DCS |

PROOF ENGINEERING

A3

