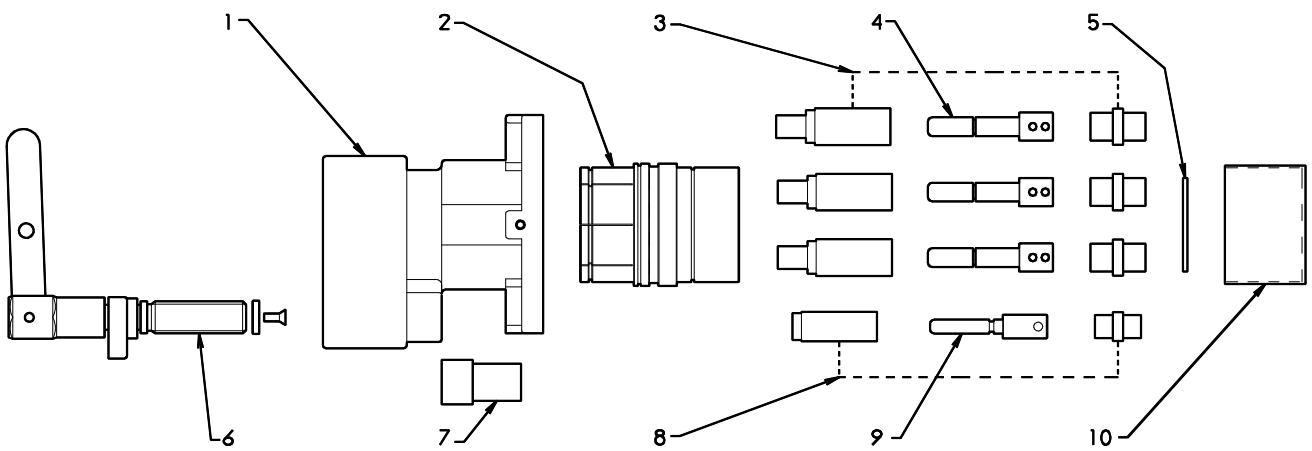


1.1kV 200A RESTRAINED SOCKET - Grub Screws



- | | |
|----------------------------|------------|
| 1. SOCKET BODY - BRASS | MC-RS01 |
| SOCKET BODY - ZINC | MC-RS01-Z |
| 2. SOCKET BARREL - BRASS | MC-RS02 |
| SOCKET BARREL - ZINC | MC-RS02-Z |
| 3. PHASE CONTACT PIN | |
| INSULATOR AND BACK CAP KIT | AA-S112 |
| 4. PHASE CONTACT PIN. | |
| 7.0mm ENTRY | A-RS06-7 |
| 8.0mm ENTRY | A-RS06-8 |
| 9.0mm ENTRY | A-RS06-9 |
| 9.5mm ENTRY | A-RS06-9.5 |

- | | |
|-----------------------------|--------|
| 5. INSULATOR RETAINING DISK | RSD-1 |
| 6. SPINDLE ASSEMBLY | A-RS10 |
| 7. SPINDLE DUST CAP | P-RS15 |
| 8. PILOT PIN | |
| INSULATOR AND BACK CAP KIT | K-RS09 |
| 9. PILOT PIN | A-RS09 |
| 10. SOCKET DUST CAP | P-DCS |

PROOF ENGINEERING

A3

