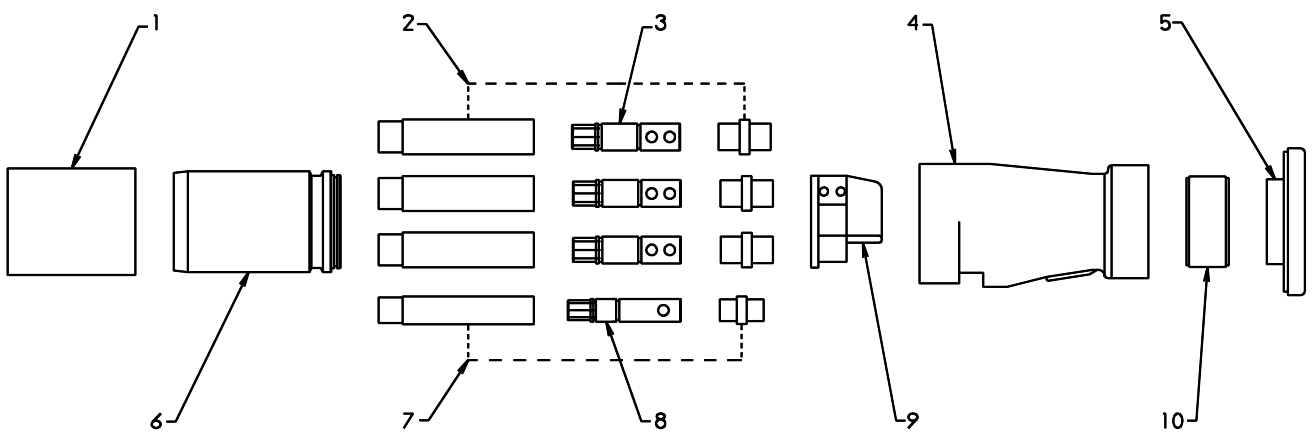


# 1.1kV 200A RESTRAINED PLUG - Grub Screws



1. DUST COVER - PLUG	P-D/COVER	6. PLUG BARREL - BRASS	M-RP01
2. PHASE CONTACT TUBE INSULATOR AND BACK CAP KIT	AA-P112	PLUG BARREL - ZINC	M-RP01-Z
3. PHASE CONTACT TUBE.		7. PILOT TUBE	AA-RP05
7.0mm ENTRY	A-RP05-7	INSULATOR AND BACK CAP KIT	
8.0mm ENTRY	A-RP05-8	8. PILOT TUBE	A-RP05
9.0mm ENTRY	A-RP05-9	9. STAR - INSULATOR RETAINING	A-RP09
9.5mm ENTRY	A-RP05-9.5	10. COMPRESSION RING	
4. PLUG BODY - BRASS	MC-RP11-B	28mm CABLE	A-RP14-28P
PLUG BODY - ZINC	MC-RP11-Z	37mm CABLE	A-RP14-37P
5. CABLE GLAND - BRASS	MC-RP12-B	41mm CABLE	A-RP14-41P
CABLE GLAND - ZINC	MC-RP12-Z	47mm CABLE	A-RP14-47P
		50mm CABLE	A-RP14-50P

A3

PROOF ENGINEERING

